



2016 European Amateur Team Championship - Division 2

6 – 9 July 2016

Kikuoka Country Club Scheierhaff L-5412 CANACH Grand Duchy of Luxembourg

The European Golf Association, the Luxembourg Golf Federation and Kikuoka Country Club have the honour and privilege to invite you to participate in the 2016 European Amateur Team Championship - Division 2, on the occasion of the Luxembourg Golf Federation 25th anniversary celebration.



President's Message

On behalf of the European Golf Association it is my pleasure to welcome all competitors, officials and supporters to the 2016 European Amateur Team Championship, Division 2.

My thanks go to the Luxembourgish Golf Federation for organising this event, to the officials, staff and volunteers who work so hard to make these tournaments so enjoyable for everyone.

I also extend my thanks to Kikuoka Golf Club and its members for making their superb golf course available for this championship.

This event is an important one as it brings together many of the best clubs in Europe. I am certain that all will be inspired to perform at the highest level of team golf in a competitive and friendly manner.

My best wishes to all teams, officials and supporters, have an enjoyable week and I hope you make many lasting friendships.

Jean-Marc Mommer
President
European Golf Association





Venue & Contacts

Kikuoka Country Club

Scheierhaff
L-5412 CANACH – Grand Duchy of Luxembourg
Tel.: **+352 356135**
Tel.: **+352 357450**

Patrick Platz , Club Manager

E-mail: kikuoka@kikuoka.lu
Webpage: www.kikuoka.lu

European Golf Association

Place de la Croix-Blanche 19
CH-1066 Epalinges - Switzerland
Tel.: **+41 21 785 70 60**
Fax: **+41 21 785 70 69**

Arnaud Baratçabal, Championship Manager

E-mail: info@ega-golf.ch
Webpage: www.ega-golf.ch

Luxembourg Golf Federation

Domaine de Belenhaff
L-6141 JUNGLINSTER – Grand Duchy of Luxembourg
Tel.: **+352 26782383**
Fax: **+352 26782393**

Mobile:

Robert GORZA +352 621225067

E-mails:

flgsecretariat@flgolf.lu

robertgorza@hotmail.com

Webpage: www.flgolf.lu

THE GOLF COURSE

Kikuoka Country Club

welcomes you





The championship course meets all requirements of a modern complex of European and world standards.

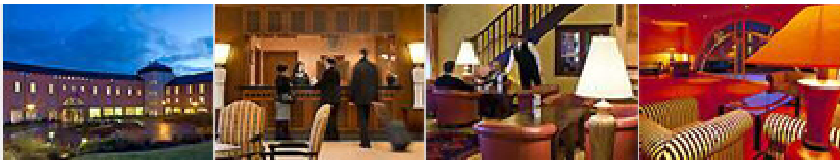
Beautifully located near the wine producing region of the Moselle and only 15 km away from Luxembourg International airport and Luxembourg city centre, Kikuoka Country Club boasts a championship 18-hole golf course and a 4 star hotel.

The numerous and splendid facilities are the perfect settings for memorable golf rounds.

Patrick PLATZ, Manager, Kikuoka Country Club

“Welcome to the Mercure Kikuoka Golf Club Hotel, the ideal location to enjoy a relaxing stay in an exceptional setting, just 20 minutes’ drive away from the city of Luxembourg and close to the charming Mosel wine region!”

Maximilian VON HOCHBERG, Hotel Manager



The Kikuoka Eagle Bar with great food and live sports



2016 European Amateur Team Championship - Division 2
Championship Schedule

Sunday, 3rd July:	Teams arrival
Monday, 4th July:	1 st practice day, Team registration
Tuesday, 5th July:	2 nd practice day, Team registration (<i>no later than 12h00</i>)
	Championship Committee meeting
	Captains meeting
	Official team photos
	Opening Ceremony at 19h00
Wednesday, 6th July:	Stroke play qualification - First round
Thursday, 7th July:	Stroke play qualification - Second round
Friday, 8th July:	Match play - Day I
Saturday, 9th July:	Match play - Day II
	Closing Ceremony & Farewell Dinner
Sunday, 10th July:	Teams departure

TOURNAMENT HISTORY

The European Amateur Team Championship, Division 2, was first played in Slovenia in 2002.

The first three placed teams qualify for the following year's European Amateur Team Championship.

Winners of the previous European Amateur Team Championship, Division 2:

2015	<u>Postolowo Golf Club, Poland</u>
Winner	Portugal
2014	<u>Golf & Spa KUNETICKA HORA, Czech Republic</u>
Winner	Wales
2013	<u>Golf & Spa KUNETICKA HORA, Czech Republic</u>
Winner	Belgium
2012	<u>Keilir GC, Iceland</u>
Winner	England
2010	<u>Blacksearama GC, Bulgaria</u>
Winner	Austria
2009	<u>Three qualifiers for 2010 based on entry:</u>
Winner	Poland, Slovakia, Switzerland
2008	<u>Crete GC, Greece</u>
Winner	Czech Republic
2007	<u>Tallinn GC, Estonia</u>
Winner	Estonia
2006	<u>Ptuj GC, Slovenia</u>
Winner	Belgium
2004	<u>Binowo Park GC, Poland</u>
Winner	Austria
2002	<u>Bled GC, Slovenia</u>
Winner	Belgium

Transportation

By aircraft

Luxembourg International Airport is the nearest international airport which is situated approximately 15 km from Kikuoka Country Club. Transport to/from the official hotel will be provided according to your announced flight details on the day of teams' arrival – Sunday, 3rd July and Monday, 4th July, as well as on the day of team's departure - Sunday 10th July.

Meeting point is at the arrival hall of Luxembourg International Airport

By car

Kikuoka Country Club	Scheierhaff	L-5412 CANACH
Grand Duchy of Luxembourg		
GPS: 50°6'41.669"N, 15°49'9.128"E		

Accommodation

The official hotel which will accommodate the teams on site is within walking distance from the golf course and all practice facilities:

Hotel Mercure Kikuoka Golf Club

Address: Scheierhaff L- 5412 CANACH Luxembourg

Website: <http://www.mercure.com/accorhotels.com>

Email: H2898@accor.com

All reservations have to be made strictly via the Accommodation Coordinator - see contact details below.

Julia BENSIMON CHEMLA

Event Manager

Hôtel Mercure Kikuoka Golf Club Luxembourg

(+352) 26 35 4 25 05

julia.chemla@accor.com



Special room prices valid from 3 -10 July :	
Single room:	90.- EUR / night incl. breakfast and VAT
Double room:	110.- EUR / night incl. breakfast and VAT
Duplex room (3 persons):	170.- EUR / night incl. breakfast and VAT
Breakfast will be served from 6h00 a.m. to 10h00 a.m. daily.	

Filled out Accommodation Form has to be sent to the Accommodation Coordinator by 1st May 2016 at the latest.

Registration

Team captains are asked to register their players at the Tournament Office in the clubhouse on Monday, July 4th from 8h00 a.m. till 5h00 p.m. and on Tuesday, July 5th from 8h00 till 12h00 a.m.

Team Fee

The Team fee amounts to **1.200 EUR** for six players, a team captain and a team advisor. Each additional person accompanying the team will be charged by **150 EUR**.

**The team fee payment has to be made
in EUROS before arrival by bank transfer to the
Luxembourg Golf Federation:**

Bank: Banque Internationale à Luxembourg Bank
Identification Code (BIC): BILLULL
Bank account: IBAN LU93-0022-1941-2220-0000

Catering

Meals will be available at Hôtel Mercure Kikuoka Golf Club from 6h30 a.m. till 10h00 p.m. daily in a dining room accessible for players, team captains and advisors only. Breakfast is included in the accommodation price and will be served from 6h00 a.m. till 10h00 a.m.; Lunches and Dinners will be served continuously from 11h00 a.m. till 10h00 p.m. in the form of a hot and cold buffet. The price of the buffet with unlimited access to the special dining room amounts to 20 EUR per person and day. Buffet vouchers will be made available upon team's registration and the payment will have to be made in cash in EUR or by credit card on the last day of the championship. Water and fruit will be available for players free of charge on the course during the championship days.

Ceremonies

The Opening Ceremony will be held on Tuesday, July 5th at 19h00 at the clubhouse followed by the Welcome Party. The Closing Ceremony & Farewell Dinner will be held on Saturday, July 9th immediately after the end of Day II matches. All players, team captains, advisors, officials and guests are welcome to Farewell Dinner.

Communications

The use of handheld transceivers (walkie-talkie) for communication purposes between Team Captains, Team Advisors and Team Players, is prohibited.

Conditions of Competition

The championship's Conditions of Competition and EGA Generic Conditions of Competition, applicable to all EGA Championships in 2016, are available at <http://www.ega-golf.ch>

Course Guide

A yardage book will be available free of charge for all members of attending teams upon registration.

Dress Code

A reasonable standard of dress is required at all times on the course and in the clubhouse. Jeans, tee shirts and track-suits are not permitted. Caps and hats are not permitted in the clubhouse. Only soft spikes are permitted on the course. Mobile phones must be switched off on the course and in the clubhouse.

Drug Abuse

All competitors are subject to the provisions of the International Golf Federation's Anti-Doping Policy. Any competitors who are taking medication and in doubt as to their clinical status should seek advice from the EGA Office not later than 30 days before the start of the championship.

Golf Bags

Golf bags may be stored upon request in a special room at the clubhouse.

Golf Shop

A full assortment pro shop is on the premises of Kikuoka Country Club.

Lockers

Lockers will be available for the teams free of charge. They will be labelled with the flags of the attending countries. The key deposit is 20 EUR. Please do not leave any valuables in the locker room.

Manual trolleys

Manual trolleys will be available free of charge. Please complete and return the Manual Trolley Booking Form by June 17th at the latest.

Medical Service

During the championship, medical service and first-aid kits will be available on the premises of Kikuoka Country Club.

Pigeon Holes

Pigeon holes for captains' information will be located in the tournament office. Please check regularly for information.

Practice Facilities

Driving range, chipping and putting greens will be open one hour prior to the first starting time and will be available till 8h30 p.m. daily.

Practice Rounds

Two official practice rounds will take place on Monday, July 4th and on Tuesday, July 5th based on the EGA official draw for practice rounds.

Enclosures:

- 1. Accommodation Booking Form***
- 2. Travel Arrangements Form***
- 3. Team Members Information Form***
- 4. Manual Trolley Booking Form***



**European Amateur Team Championship - Division 2
6-9 July 2016
Kikuoka Country Club / Canach / Luxembourg**

ACCOMMODATION BOOKING FORM

NATION:

TEAM CAPTAIN

TEAM ADVISOR

TEAM PLAYERS

1	First Name	Family Name
2		
3		
4		
5		
6		

Date of arrival

Date of departure

Number of requested rooms

SINGLE

DOUBLE

DUPLEX (3 persons)

Date and signature

Name and Email

Accommodation Booking Form to be sent by 1st May 2016 at the latest to:

Julia BENSIMON CHEMLA

Event Manager

Hôtel Mercure Kikuoka Golf Club Luxembourg

(+352) 26 35 4 25 05

julia.chemla@accor.com

Mercure
HOTELS
HÔTEL MERCURE
KIKUOKA GOLF CLUB



SCHEIERHAFF, L-5412 CANACH LUXEMBOURG

T (+352) 26 35 41 | F (+352) 26 35 44 44

MERCURE.COM | ACCORHOTELS.COM

**European Amateur Team Championship - Division 2
6-9 July 2016
Kikuoka Country Club / Canach / Luxembourg**

TRAVEL ARRANGEMENTS FORM

NATION :

Arrival by car: Arrival by air:

Date of arrival	Time of arrival	Flight Number

Number of luggage	Number of golf bags	Number of persons

Date of departure	Time of departure	Flight Number

Captain's Name & Email		
Date and signature		

Travel Arrangements Form has to be sent to the FLG by June 1st, 2016.

E-mails:	flgsecretariat@flgolf.lu	jmt@pt.lu
-----------------	--------------------------	-----------

Fax :	+352 26782393
--------------	---------------

**European Amateur Team Championship - Division 2
6-9 July 2016
Kikuoka Country Club / Canach / Luxembourg**

TEAM MEMBERS INFORMATION FORM

NATION:

TEAM CAPTAIN	Mobile Phone Number	Email

TEAM ADVISOR	Mobile Phone Number	Email

Additional persons	coming with the team

TEAM PLAYERS			
	First Name	Family Name	Handicap
1			
2			
3			
4			
5			
6			

Date and signature: _____

Team Members Information Form has to be sent to the FLG by Thursday 24th June, 2016 at the latest.

E-mails:	flgsecretariat@flgolf.lu	
Fax :	+352 26782393	

**European Amateur Team Championship - Division 2
6-9 July 2016
Kikuoka Country Club / Canach / Luxembourg**

MANUAL TROLLEY BOOKING FORM

NATION:

TEAM PLAYERS			
	First Name	Family Name	
1			
2			
3			
4			
5			
6			

Date and signature: _____

Manual Trolley Booking Form has to be sent to Kilkkuoka Country Club by June 1st, 2016 at the latest.

E-mail:	kikuoka@kikuoka.lu	jmt@pt.lu
Fax :	+352 357450	